



AQUILA
GPS FLIGHT INSTRUMENT

Quick Start Guide GPS Aquila



1 - INTRODUCTION	3
2 - OVERVIEW	4
2.1 - SKETCH	4
2.1 - ACCESSORIES	5
3 - TECHNICAL SPECIFICATIONS	6
3.1 - GENERAL	6
3.2 - DISPLAY	6
3.3 - CONNECTIVITY	6
3.4 - SOFTWARE	6
4 - GENERAL SETTINGS	7
4.1 - MAIN MENU	7
4.2 - LANGUAGES	8
4.3 - INSTALL OR UPDATE AN APPLICATION	9
4.4 - CONNECT A BLUETOOTH DEVICE (LX,ERA,...)	11
5 - XC SOAR	13
5.1 - PROFILES	13
5.2 - CONFIGURE YOUR XC SOAR	14
5.3 - BEFORE FLIGHT	16
5.3.1 - <i>Flight preparation</i>	16
5.3.2 - <i>Set a task</i>	17
5.4 - IN FLIGHT	19
5.4.1 - <i>InfoBox</i>	19
5.4.2 - <i>Interfacing with gestures</i>	20
5.5 - AFTER FLIGHT	20
5.5.1 - <i>Get the flight log file</i>	20

1 - Introduction

You choose Aquila GPS to follow your Gliding journey.

We hope that it will give you entire satisfaction for what it was made : help you to navigate further, faster and longer in the sky.

Our goal is to offer you our expertise and solutions so that you can fully live your passion

Here is a quick guide to help you use your Aquila with XcSoar.

Please check our Support section on www.puregliding.fr to check our database, latest updates and tutorials.

For any questions or comments, contact us :
contact@puregliding.fr

2 – Overview

2.1 – Sketch



Dimension : 135 x 85 x 12 mm

2.1 – Accessories



1. Suction Mount
2. 60 cm Mini-USB cable
3. Mount
4. Stylus

*Note : the **stylus** is located in the **mount**_(3)*

3 – Technical Specifications

3.1 - General

Dimension	135 x 85 x 12 mm
Processor	MEDIATEK MT8163 - 1.3 Ghz
RAM	1 Go
Memory	16 Go
Battery	1700 mAh
Endurance	1 h 45
Integrated Pressure Sensor	No

3.2 - Display

Screen	5 " LCD
Resolution	480 x 800 pixels
Brightness	800 Nits
Touch Screen	Resistive

3.3 - Connectivity

Bluetooth 4.0	Yes
Wifi	Yes
External Storage	Micro SD Slot
USB	Mini USB 2.0 - OTG USB

3.4 - Software

OS	Android 6.0
Navigation software	Xc Soar preinstalled

Android 6.0 allows users to install other applications. For example, you can install another navigation software like LK8000.

4 – General settings

4.1 – Main menu

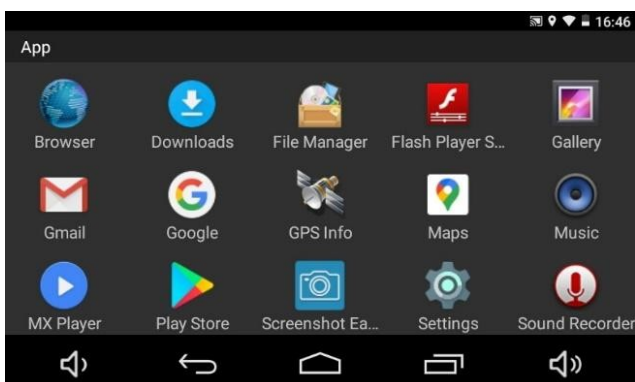


FLY : Open your apps

APPS : Access to the application menu

SETTINGS : Open the settings menu

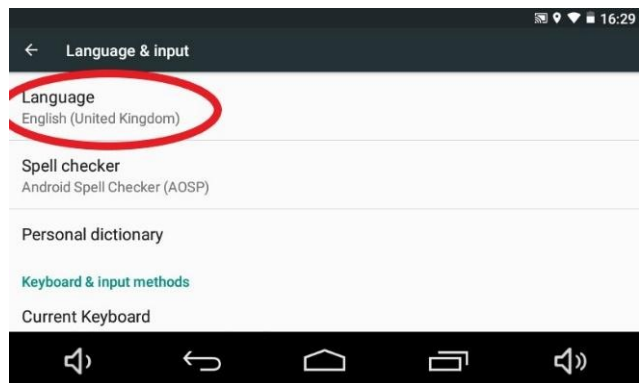
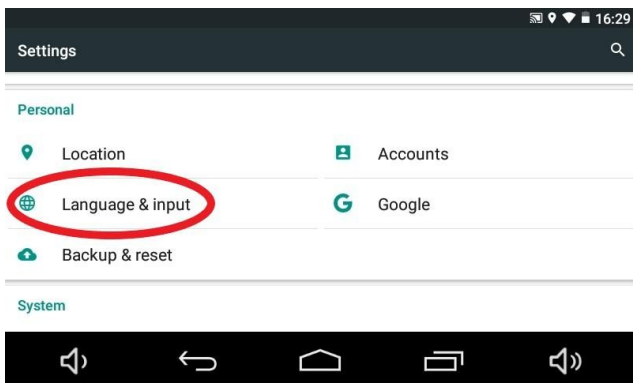
Note : You can change the app linked to the FLY icon on the main menu. Apply pressure on the FLY icon during 3s and select a new app.



4.2 - Languages

Default language is english, but there are 45 languages available.
To change your device language :

- Go to **SETTINGS**
- Click on **LANGUAGE & INPUT**
- Click on **Language**
- Select your language

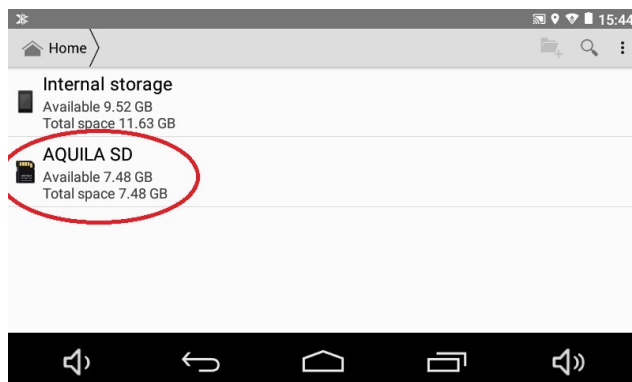


4.3 – Install or update an application

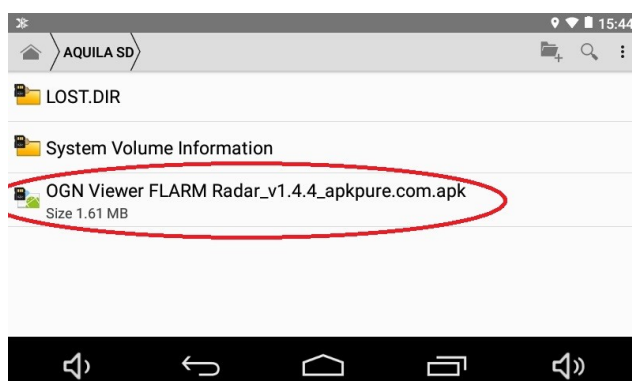
There are two ways to install or update an application on Android. The simplest method is to use Google Play store with your Google account.

To install an application with the APK file :

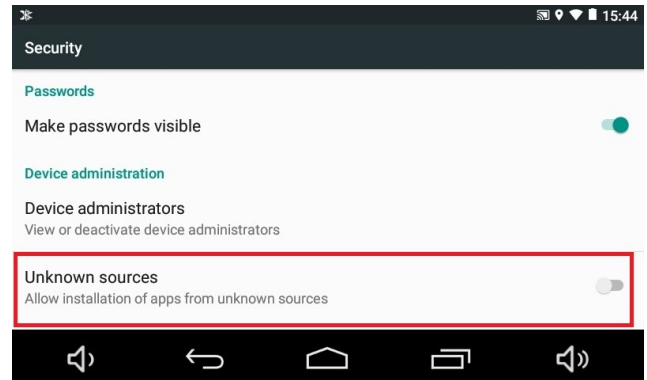
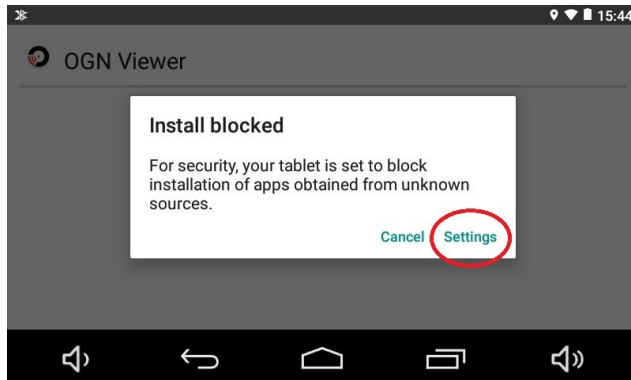
- **Copy** the APK file from an external storage, or download it from internet.
- Go to **File Manager** :



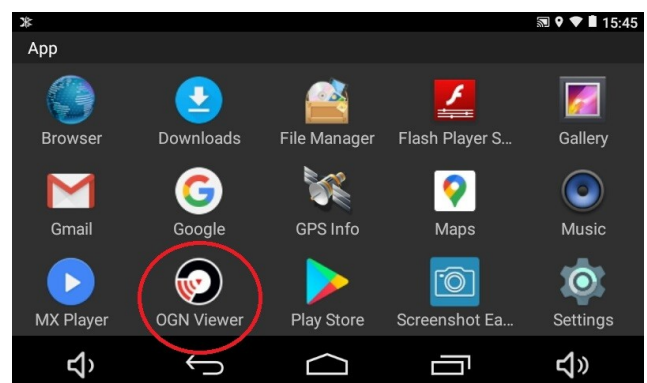
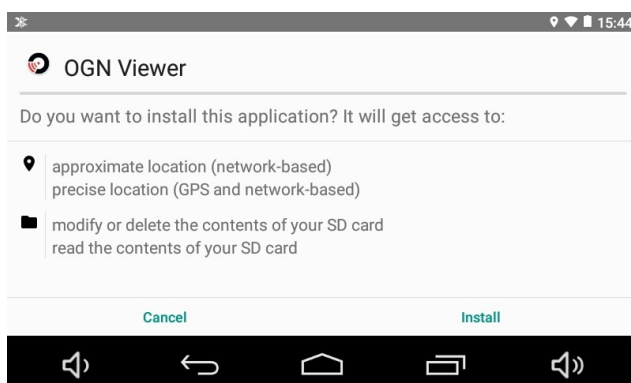
- Find you file and **click on it** :



- Click on settings and allow **installation of apps from unknown sources** :



- Now install your app. It is available on your android device :



Note :

*The '**unknown sources**' safety prevents you from installing unsafe apps coming from elsewhere than the Play Store.*

Be careful of the APK files you install on your device, and always make sure the app you want to install is safe.

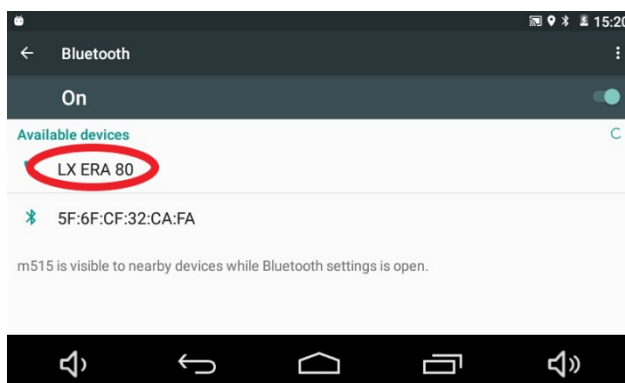
4.4 – Connect a Bluetooth device (LX,ERA,...)

Aquila is fitted with a Bluetooth 4.0 chip that enables it to connect with other instruments in the glider such as variometers, navigational equipments, flight data recorders...

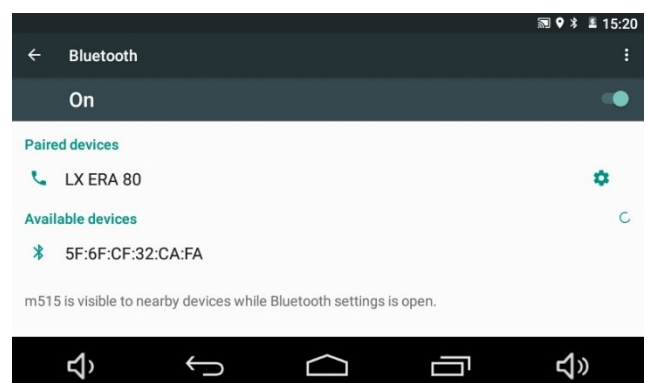
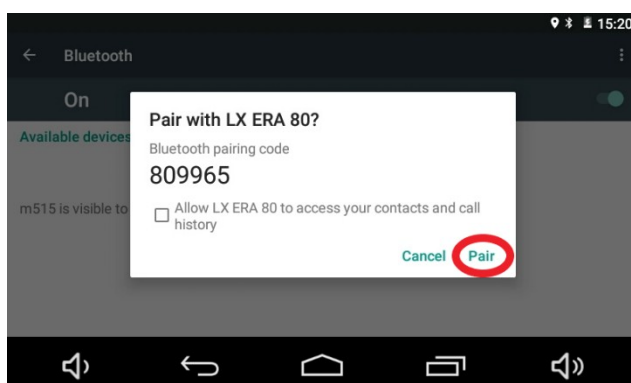
Connect your Aquila to another device can be really useful to receive GPS Data, Total pressure, wind, flarm data etc..

To **pair** a Bluetooth device :

- Go to Bluetooth Settings and click on the device you want to pair with :



- Click on « Pair » :



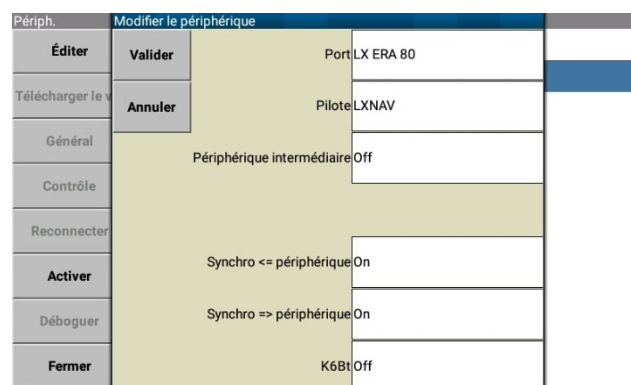
Now your device is paired with your AQUILA.

Configure your device on XcSoar :

- Go to **Options** -> **Devices**. Click on Edit on an empty device port.
- Select your device :



- Configure your device :



Note : LXNAV driver is used for LXNAV and LXNavigation equipments (LX8000, ERA, ...)

5 - XC Soar

Here is a quick start Guide for XCSoar made by Pure Gliding.

You can find more information in the official XCSoar manual available on <https://www.xcsoar.org/discover/manual.html>

5.1 - Profiles

XC Soar allows you to use preconfigured profiles or to create your own.
Some are available on : www.puregliding.fr/ressources

To select a profile :

- Click on **FLY**. Select your desired profile :

XCSoar v6.8.13-Android-git#7500ae2883

Quit



What do you want to do?



XCSoar v6.8.13-Android-git#7500ae2883

Quit



Profile Profil Club.prf

Continue

5.2 – Configure your XC Soar

Languages

Select a new language :

- Double tap on your screen to open the XcSoar main menu
- Click on **Config** then **System**
- Go to **Look** > **Language**, **Input**, click on **Language** and select your desired language

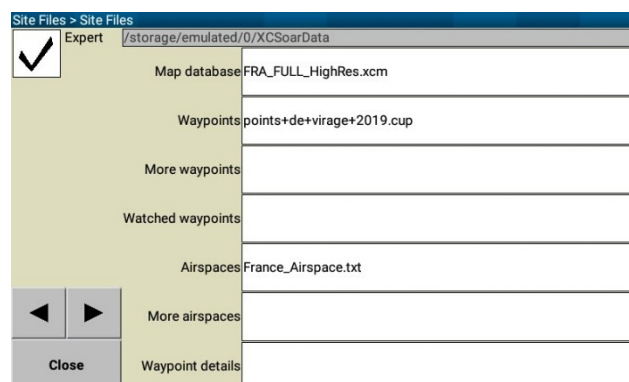
Files

Before your first flight with XC Soar, you have to configure your files according to your location such as Maps, Waypoints, Airspace ...

You can download it from internet directly on XcSoar if your device is connected to the Wifi or find them on www.puregliding.fr/ressources

- Copy your files in **XCSoarData** folder
- On XCSoar, go to **Config** > **System** > **Site Files**
- Select a file for each parameter, or download it by clicking on **Download**

Note : Airspace files are not official. Before each flight, check the official documentation available in your country



Plane

In order to have accurate glide ratio calculations, you should configure your glider.

You can choose or Edit your glider :

- **Config** > **Plane**
- Click on **New** to create a new plane.
- Enter **Registration** and **Comp ID**
- Click on **Polar** to define a polar.

You can either choose your glider by clicking on **List** or enter manually three points of your glider polar.

Planes	
Close	RJ.xcp - Active <small>/storage/emulated/0/XCSoarData/RJ.xcp</small>
New	
Edit	
Delete	
Activate	

Planes		Plane Details: RJ	
Close	ML.xcp <small>/storage/</small>	OK	Registration RJ
New		Cancel	Comp. ID RJ
Edit			Polar: LS-8 (15m)
Delete			Type LS-8 (15m)
Activate			Handicap 100 %
			Wing Area 10.5 m²
			Max. Ballast 185 l
			Dump Time 120 s
			Max. Cruise Speed 200 km/h

5.3 – Before flight

5.3.1 – Flight preparation

Select your plane

Before your flight, you have to make sure that the right plane is selected

To activate your plane :

- Go to **Config > Plane**
- Select the right plane and click on **Activate**

Day settings

- Go to **Config > Flight**
- Enter your **ballast QNH** and **bugs** (50% indicates the glider's sink rate is doubled)

Set your task

If you plan to fly a declared task, you will have to configure it.

5.3.2 – Set a task

Create a task

- Go to **Nav > Task**
- Click on **Add Turnpoint**, and search your desired turnpoint.

Add as much turnpoints as you want.

Set a departure

- Click on your first turnpoint then **Edit Point**
- **Change Type** allows you to choose between different types of start :

Start Cylinder : *Task start when the plane exit the cylinder.*

Start Line : *Task start when the plane cross the start line.*

You can edit the **cylinder radius** or the **gate width**.

Turnpoints

You can edit the **cylinder radius** of each turnpoint.

There are different types of turnpoints :

- **Turn Point cylinder** : A cylinder. Any point within area scored from center
- **Symmetric quadrant** : A symmetric quadrant with a custom radius.
- **FAI quadrant** : A 90 sector with “infinite” length sides. Cross any edge, scored from corner point.
- **BGA Fixed Course sector** : 500m radius circle + 20km of 90° sector (*mainly used in championships*)

Set a finish

- Select your last turnpoint and click on **Make Finish**

Rules

Click on **Rules** to set the task rules.

Task type allows you to choose between AAT or AST.

Finish min. height is the minimum height you must be when crossing the finish line/circle.

Be careful to set the correct reference :

- **AGL** : **A**bove **G**round **L**evel
- **MSL** : **M**ean **S**ea **L**evel

Save and load a task

To save a task :

- Click on **Manage** then **Save**. Enter a task name.

To load a task :

- Click on **Browse**, then **Load**

5.4 – In flight

5.4.1 - InfoBox

XCSoar interface is built with 8 InfoBox which provide different data during your flight.

You can customize each InfoBox to display the useful data.

To set an InfoBox :

- **Click on an InfoBox** > **Switch InfoBox** > *Select the data you want to display*

Some InfoBox parameters can be set by clicking on it. For example, clicking on **MC Manual** allows you to change MacCready settings.

You can find two profiles, created by glider pilots, with the useful InfoBox preconfigured.

To get them go on : www.puregliding.fr/ressources

5.4.2 – Interfacing with gestures

XcSoar allows you to quickly access menu by drawing schemas.

Here are some examples :



: **show menus**



: **zoom +**



: **zoom -**



: **open alternate menu**

5.5 – After flight

5.5.1 – Get the flight log file

- Go to the file manager, flight log files are saved in **XcSoardata**
> **Logs**



AQUILA

GPS FLIGHT INSTRUMENT

Quick Start Guide

GPS Aquila

www.puregliding.fr contact@puregliding.fr